



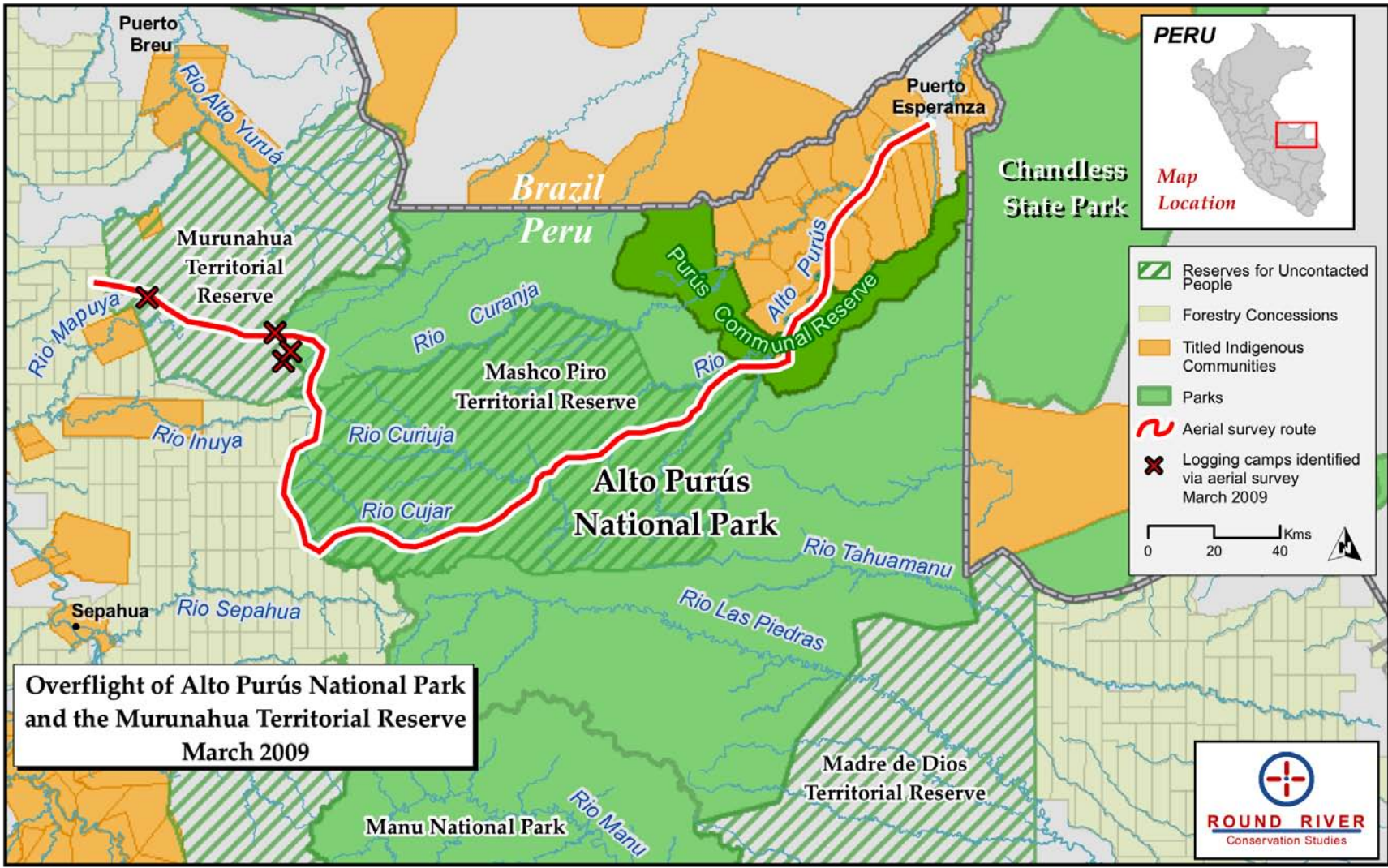
ROUND RIVER

Conservation Studies

Overflight Reveals Illegal Logging Camps in the Murunahua Territorial Reserve

On March 15th 2009, Round River Conservation Studies, in coordination with Peru's Protected Areas Agency, SERNANP, and the administration of the Alto Purús National Park, conducted an overflight of the Park and adjacent Murunahua Territorial Reserve for Indigenous People Living in Voluntary Isolation. The primary objective of the overflight was to investigate illegal logging activity along the western border of the Park in the headwaters of the Sepahua, Inuya, and Mapuya Rivers. (See map.) Round River documented illegal logging activity in these regions in 2004 and 2006.

Three logging camps were found inside the Reserve near the border of the Park in the headwaters of the Inuya River, and one camp was located on the western side of the Reserve in the headwaters of the Mapuya River. All four camps looked to be active, indicating that loggers continue to illegally cut mahogany within the Murunahua Territorial Reserve and the Alto Purús National Park. The logging is a serious threat to the indigenous people in voluntary isolation who live in the region. Not only are these "uncontacted" people extremely vulnerable to diseases brought by outsiders, but there is a history of violent conflicts between them and loggers. Mahogany taken from these areas is transported to the Inuya River and on to Pucallpa via the Ucayali River.



PERU

Map Location

- Reserves for Uncontacted People
- Forestry Concessions
- Titled Indigenous Communities
- Parks
- Aerial survey route
- Logging camps identified via aerial survey March 2009

0 20 40 Kms

Overflight of Alto Purús National Park and the Murunahua Territorial Reserve
March 2009





A logging camp inside the Murunahua Territorial Reserve near the boundary of the Alto Purús National Park (Photos: Chris Fagan 3/09)

